

*Danfoss*

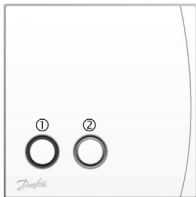


**088U0252**

**CF-WR Electronic Wireless Relay**

## 1. Functional overview

**CF-WR Wireless Relay**



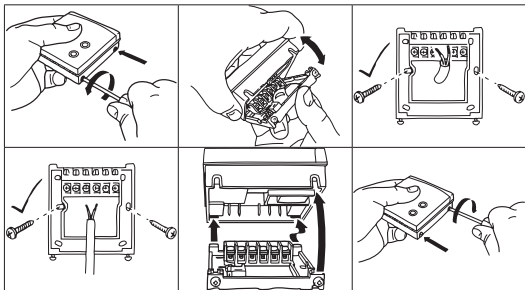
- ① PROG button with PROG LED.
- ② Button not used for CF2+.

**CF-MC Master Controller**



- ③ Menu Selection button.
- ④ Install LED.
- ⑤ OK button.

## 2. Installation



### Activate CF-MC Master Controller:

- Select Install Mode with the Menu Selection button ③. The Install LED ④ flashes.
- Press the OK button ⑤ to activate Install Mode. The Install LED ④ lights continuously.

**Activate CF-WR Wireless Relay:**

- Press the PROG button ①. The PROG LED flashes during communication.
- If installation succeeded: The PROG LED turns off.
- If installation fails: The PROG LED flashes 5 times. Repeat the installation procedure.

### **3. Configuration**

Configuration of CF-WR Wireless Relay is made with the CF-RC Remote Controller.

Please refer to the instruction for CF-RC for further information.

### **4. Uninstallation / Factory Reset**

1. Disconnect CF-WR Wireless Relay from the power supply.
2. Press and hold the PROG button ①.
3. While pressing the PROG button ①, reconnect the power supply.
4. Release the PROG button ①, when the PROG LED first turns on and then off.

## 5. Wiring

### 1 Electronics

N

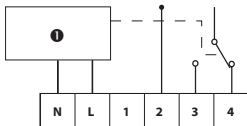
L

1 Not in use

2 Com

3 Zone 1 on

4 Zone 1 off



*Note: For mains voltage applications link terminals L and 2.*

## 6. Troubleshooting

Error indication	Possible cause
The PROG LED flashes 5 times	Installation / Link test has failed

## 7. Specifications

Supply voltage	230 Vac $\pm$ 15%, 50 Hz
Construction	EN 60730-1, EN 300-220-1
Max. ambient temperature	45°C
Switch type	1 x SPDT, type 1B
Switch rating	230 Vac, 12 (6) A
IP class	IP 40
Control pollution situation	Degree 2
Max. range	30 m
Operating frequency	868.42 MHz
Software classification	Class A
Rated impulse voltage	2.5 kV
Ball pressure test	75°C



---

Part No 30392v01



Wireless wellness by Danfoss

[www.heating.danfoss.com](http://www.heating.danfoss.com)