

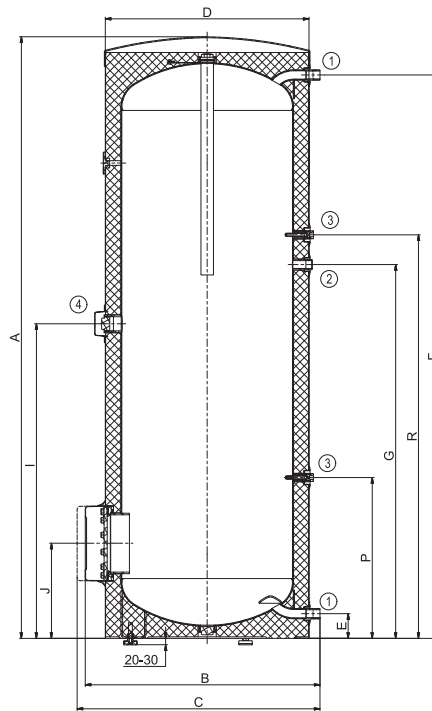


OKCE 500 S, 750 S, 1000 S

Type of storage tank		OKCE 500 S	OKCE 750 S	OKCE 1000 S
Order number		121311110	105513032	105513033
Capacity	[l]	462	750	969
Max. weight of the empty water heater	[kg]	106	158	206
Insulation thickness	[mm]	50	80	80
Thermal conductivity of the insulation	[W·m ⁻¹ ·K ⁻¹]	0,021	0,032	
Power consumption of the el. heating unit	[W]	according to the Type of accessories		
Heating time from 10 °C to 60 °C	[h]	according to the Type of accessories		
Electrical connection		according to the Type of accessories		
Recommended circuit breaker size	[A]	according to the Type of accessories		
Degree of protection		according to the Type of accessories		
Max. operating temp. / overpressure in tank	[°C]/[bar]	80/10		
Energy efficiency class		C		
Static loss	[W]	110	127	140

Dimensions [mm]	A	B	C	D	E	F	G	I	J	P	R
OKCE 500 S	1924	800	860	700	55	1790	1264	1040	287	380	1409

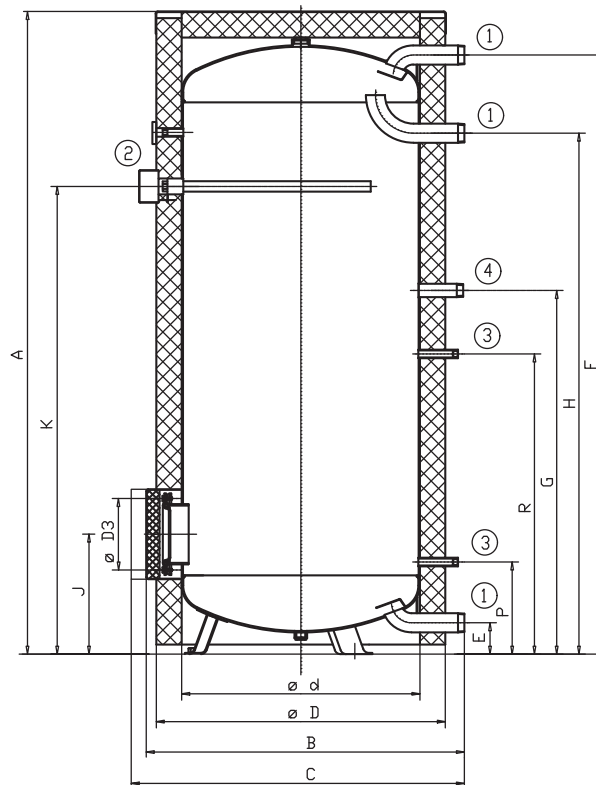
SOCKET no. 1 1" outer
 SOCKET no. 2 ¾" inner
 SOCKET no. 3 ½" inner
 SOCKET no. 4 ¾" inner



OKCE 500 S

Dimensions [mm]	A	B	C	d	D	D3	E	F	G	H	J	K	P	R
OKCE 750 S	2030	1030	max. 1140	750	910	225	100	1893	1147	1642	382	1477	292	947
OKCE 1000 S	2050	1130	max. 1240	850	1010	225	100	1910	1155	1650	390	1515	300	955

SOCKET no. 1 2" outer
 SOCKET no. 2 ¼" inner
 SOCKET no. 3 ½" inner
 SOCKET no. 4 ¾" outer



OKCE 750 S, 1000 S